

Hurricane Katrina Data Handling Questions

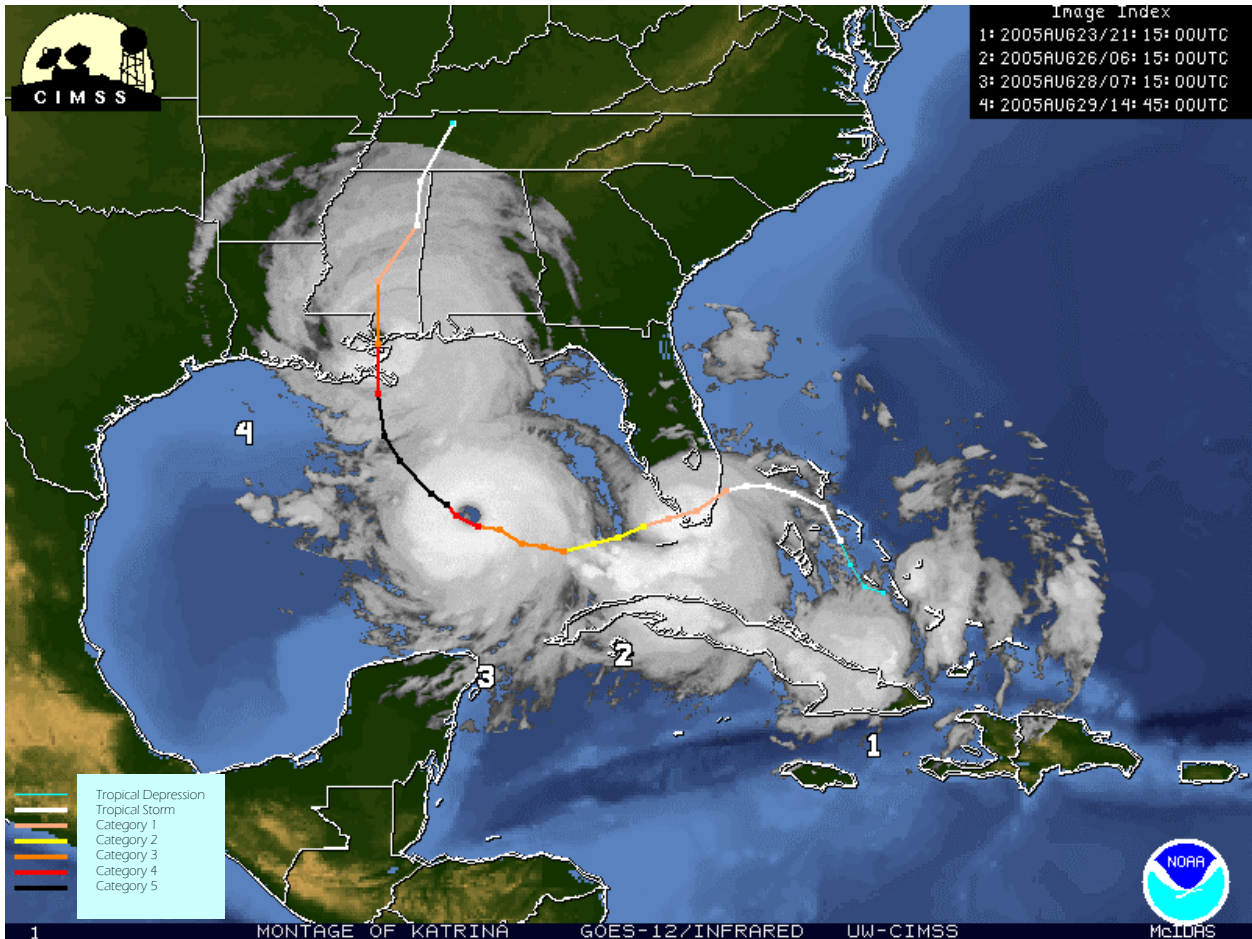


Figure 1. Path and Intensity of Hurricane Katrina.

Source: <http://cimss.ssec.wisc.edu/tropic/archive/montage/atlantic/2005/KATRINA-track.gif>

Looking at the satellite image above answer the following questions

- 1) What information does the image above give you about Hurricane Katrina?

- 2) Give the date and times for the following points on the image above (the first one is done for you)

Point 1 23rd August 2005 21:15
 Point 2
 Point 3
 Point 4

- 3) What do the following line colours in the hurricane track illustrate?

<p>—————</p> <p>—————</p> <p>—————</p>	<p>—————</p> <p>—————</p> <p>—————</p> <p>—————</p>
--	---